

# AC8025P Grade for Steel

P



**New 'Absotech Platinum' CVD Coating  
for General Purpose Cutting of Steel**

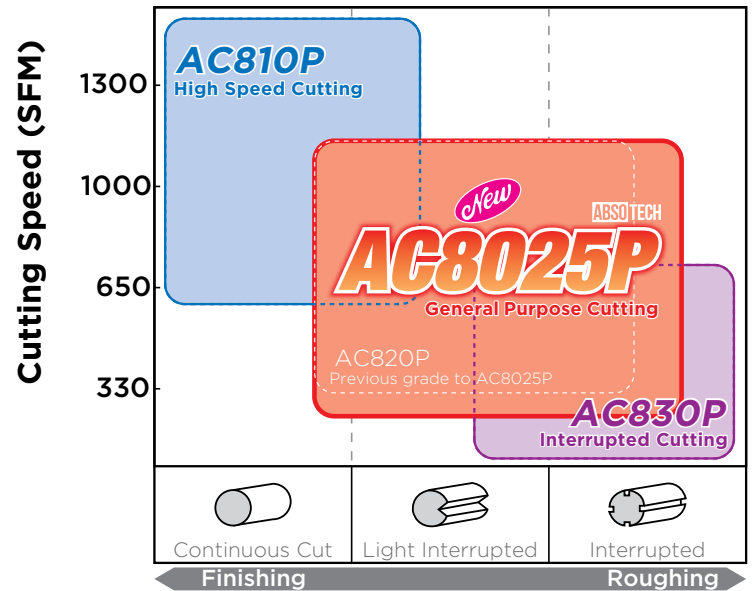
# AC8025P



## Features & Benefits

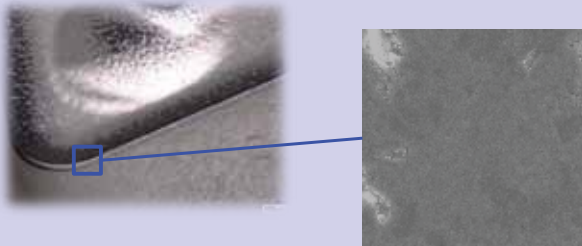
- Sumitomo's new CVD coating, Absotech Platinum, creates high reliability with edge treatment suitable for steel turning.
- New grade yields high adhesion strength, smooth surface treatment and a newly developed high-functional coat with reduced tensile stress that significantly reduces chipping.
- Excellent sharpness of the edge greatly reduces chattering.

## Application Range



### ■ New surface layer

- Excellent adhesion and chipping resistance
- Easily distinguishable used cutting edge



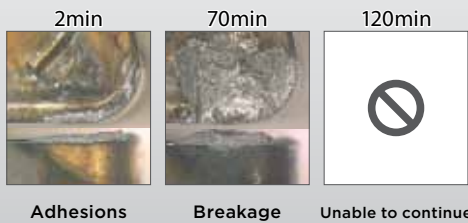
Ra=0.04 μm

Patented Process

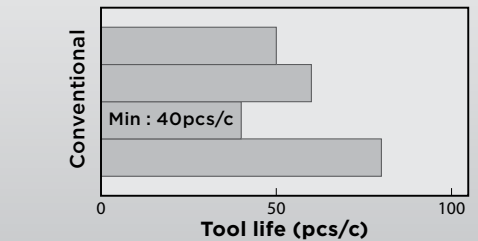
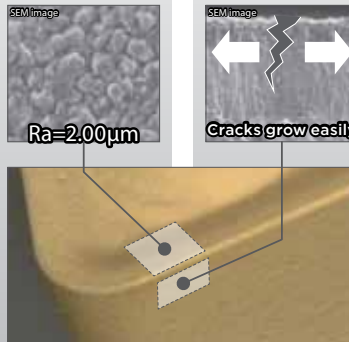
### Effect of smooth surface (Adhesion resistance)

### Effect of special surface layer (Chipping resistance)

Conventional Grade

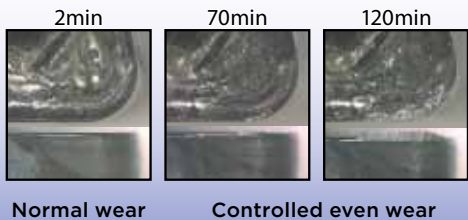


Work Material : 4115 Steel (Facing)  
Insert : CNMG432EGU  
Cutting Conditions :  $v_c=330-1000$  SFM  $f=0.012$  IPR  
 $a_p=0.059''$  Wet

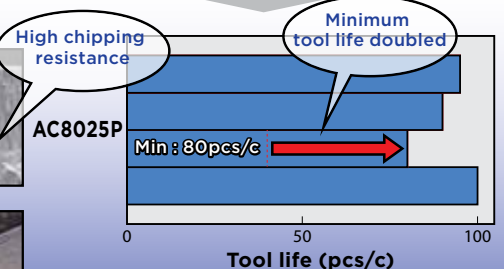
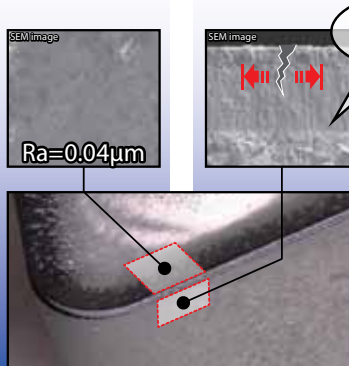


Work Material : 1049 Steel Hub  
Insert : CNMG433EGU  
Cutting Conditions :  $v_c=600$  SFM  $f=0.012$  IPR  
 $a_p=0.0197''$  Wet

AC8025P



Extremely smooth surface → Resists adhesions



longer and more stable tool life → Predictable tool life

# AC8025P Availability - Negative Inserts

CNMG 80° Diamond/Negative					
Sumitomo Catalog Number	AC8025P	Inscribed Circle	Thickness	Nose Radius	Insert Hole Diameter
CNMG431EEG	●	.500	.1875	.0156	.2031
CNMG432EEG	●	.500	.1875	.0313	.2031
CNMG433EEG	●	.500	.1875	.0469	.2031
CNMG543EEG	●	.625	.250	.0469	.250
CNMG643EEG	●	.750	.250	.0469	.3126
CNMG432EEM	●	.500	.1875	.0313	.2031
CNMG433EEM	●	.500	.1875	.0469	.2031
CNMG543EEM	●	.625	.250	.0469	.250
CNMG643EEM	●	.750	.250	.0469	.3126
CNMG431EFL	●	.500	.1875	.0156	.2031
CNMG432EFL	●	.500	.1875	.0313	.2031
CNMG431EGE	●	.500	.1875	.0156	.2031
CNMG432EGE	●	.500	.1875	.0313	.2031
CNMG433EGE	●	.500	.1875	.0469	.2031
CNMG434EGE	●	.500	.1875	.0625	.2031
CNMG542EGE	●	.625	.250	.0313	.250
CNMG543EGE	●	.625	.250	.0469	.250
CNMG643EGE	●	.750	.250	.0469	.3126
CNMG644EGE	●	.750	.250	.0625	.3126
CNMG322EGU	●	.375	.125	.0313	.150
CNMG431EGU	●	.500	.1875	.0156	.2031
CNMG432EGU	●	.500	.1875	.0313	.2031
CNMG433EGU	●	.500	.1875	.0469	.2031
CNMG542EGU	●	.625	.250	.0313	.250
CNMG543EGU	●	.625	.250	.0469	.250
CNMG432EGUW	●	.500	.1875	.0313	.2031
CNMG433EGUW	●	.500	.1875	.0469	.2031
CNMG543EGUW	●	.625	.250	.0469	.250
CNMG431ELU	●	.500	.1875	.0156	.2031
CNMG432ELU	●	.500	.1875	.0313	.2031
CNMG433ELU	●	.500	.1875	.0469	.2031
CNMG431ELUW	●	.500	.1875	.0156	.2031
CNMG432ELUW	●	.500	.1875	.0313	.2031
CNMG433ELUW	●	.500	.1875	.0469	.2031
CNMG432EME	●	.500	.1875	.0313	.2031
CNMG433EME	●	.500	.1875	.0469	.2031
CNMG434EME	●	.500	.1875	.0625	.2031
CNMG542EME	●	.625	.250	.0313	.250
CNMG543EME	●	.625	.250	.0469	.250
CNMG544EME	●	.625	.250	.0625	.250
CNMG643EME	●	.750	.250	.0469	.3126
CNMG644EME	●	.750	.250	.0625	.3126
CNMG866EME	●	1.00	.375	.0938	.3622
CNMG432EMU	●	.500	.1875	.0313	.2031
CNMG433EMU	●	.500	.1875	.0469	.2031
CNMG434EMU	●	.500	.1875	.0625	.2031
CNMG542EMU	●	.625	.250	.0313	.250
CNMG543EMU	●	.625	.250	.0469	.250
CNMG544EMU	●	.625	.250	.0625	.250
CNMG643EMU	●	.750	.250	.0469	.3126
CNMG644EMU	●	.750	.250	.0625	.3126
CNMG866EMU	●	1.00	.375	.0938	.3622

CNMG 80° Diamond/Negative					
Sumitomo Catalog Number	AC8025P	Inscribed Circle	Thickness	Nose Radius	Insert Hole Diameter
CNMG432EMX	●	.500	.1875	.0313	.2031
CNMG433EMX	●	.500	.1875	.0469	.2031
CNMG434EMX	●	.500	.1875	.0625	.2031
CNMG542EMX	●	.625	.250	.0313	.250
CNMG543EMX	●	.625	.250	.0469	.250
CNMG544EMX	●	.625	.250	.0625	.250
CNMG643EMX	●	.750	.250	.0469	.3126
CNMG644EMX	●	.750	.250	.0625	.3126
CNMG322ENG	●	.375	.125	.0313	.150
CNMG431ENG	●	.500	.1875	.0156	.2031
CNMG432ENG	●	.500	.1875	.0313	.2031
CNMG433ENG	●	.500	.1875	.0469	.2031
CNMG542ENG	●	.625	.250	.0313	.250
CNMG543ENG	●	.625	.250	.0469	.250
CNMG642ENG	●	.750	.250	.0313	.3126
CNMG643ENG	●	.750	.250	.0469	.3126
CNMG644ENG	●	.750	.250	.0625	.3126
CNMG432ENZ	●	.500	.1875	.0313	.2031
CNMG542ENZ	●	.625	.250	.0313	.250
CNMG543ENZ	●	.625	.250	.0469	.250
CNMG642ENZ	●	.750	.250	.0313	.3126
CNMG643ENZ	●	.750	.250	.0469	.3126
CNMG644ENZ	●	.750	.250	.0625	.3126
CNMG431ESE	●	.500	.1875	.0156	.2031
CNMG432ESE	●	.500	.1875	.0313	.2031
CNMG433ESE	●	.500	.1875	.0469	.2031
CNMG431ESEW	●	.500	.1875	.0156	.2031
CNMG432ESEW	●	.500	.1875	.0313	.2031
CNMG433ESEW	●	.500	.1875	.0469	.2031
CNMG431ESU	●	.500	.1875	.0156	.2031
CNMG432ESU	●	.500	.1875	.0313	.2031
CNMG433ESU	●	.500	.1875	.0469	.2031
CNMG431ESX	●	.500	.1875	.0156	.2031
CNMG432ESX	●	.500	.1875	.0313	.2031
CNMG433ESX	●	.500	.1875	.0469	.2031
CNMG431EUP	●	.500	.1875	.0156	.2031
CNMG432EUP	●	.500	.1875	.0313	.2031
CNMG542EUP	●	.625	.250	.0313	.250
CNMG543EUP	●	.625	.250	.0469	.250
CNMG431EUX	●	.500	.1875	.0156	.2031
CNMG432EUX	●	.500	.1875	.0313	.2031
CNMG433EUX	●	.500	.1875	.0469	.2031
CNMG434EUX	●	.500	.1875	.0625	.2031
CNMG542EUX	●	.625	.250	.0313	.250
CNMG543EUX	●	.625	.250	.0469	.250
CNMG643EUX	●	.750	.250	.0469	.3126

DNMG 55° Diamond/Negative					
Sumitomo Catalog Number	AC8025P	Inscribed Circle	Thickness	Nose Radius	Insert Hole Diameter
DNMG431EEG	●	.500	.1875	.0156	.2031
DNMG432EEG	●	.500	.1875	.0313	.2031
DNMG432EEM	●	.500	.1875	.0313	.2031
DNMG431EFL	●	.500	.1875	.0156	.2031
DNMG432EFL	●	.500	.1875	.0313	.2031
DNMG332EGE	●	.375	.1875	.0313	.150
DNMG333EGE	●	.375	.1875	.0469	.150
DNMG431EGE	●	.500	.1875	.0156	.2031
DNMG432EGE	●	.500	.1875	.0313	.2031
DNMG433EGE	●	.500	.1875	.0469	.2031
DNMG331EGU	●	.375	.1875	.0156	.150
DNMG332EGU	●	.375	.1875	.0313	.150
DNMG431EGU	●	.500	.1875	.0156	.2031
DNMG432EGU	●	.500	.1875	.0313	.2031
DNMG433EGU	●	.500	.1875	.0469	.2031
DNMG331ELU	●	.375	.1875	.0156	.2031
DNMG332ELU	●	.375	.1875	.0313	.2031
DNMG431ELU	●	.500	.1875	.0156	.2031
DNMG432ELU	●	.500	.1875	.0313	.2031
DNMG432EME	●	.500	.1875	.0313	.2031
DNMG433EME	●	.500	.1875	.0469	.2031
DNMG432EMU	●	.500	.1875	.0313	.2031
DNMG433EMU	●	.500	.1875	.0469	.2031
DNMG432EMX	●	.500	.1875	.0313	.2031
DNMG433EMX	●	.500	.1875	.0469	.2031
DNMG331ENG	●	.375	.1875	.0156	.150
DNMG332ENG	●	.375	.1875	.0313	.150
DNMG431ENG	●	.500	.1875	.0156	.2031
DNMG432ENG	●	.500	.1875	.0313	.2031
DNMG542ENG	●	.625	.250	.0313	.250
DNMG543ENG	●	.625	.250	.0469	.250
DNMG432ENZ	●	.500	.1875	.0313	.2031
DNMG433ENZ	●	.500	.1875	.0469	.2031
DNMG542ENZ	●	.625	.250	.0313	.250
DNMG543ENZ	●	.625	.250	.0469	.250
DNMG544ENZ	●	.625	.250	.0625	.250
DNMG332ESE	●	.375	.1875	.0313	.150
DNMG432ESE	●	.500	.1875	.0313	.2031
DNMG433ESE	●	.500	.1875	.0469	.2031
DNMG331ESU	●	.375	.1875	.0156	.150
DNMG332ESU	●	.375	.1875	.0313	.150
DNMG431ESU	●	.500	.1875	.0156	.2031
DNMG432ESU	●	.500	.1875	.0313	.2031
DNMG433ESU	●	.500	.1875	.0469	.2031
DNMG431ESX	●	.500	.1875	.0156	.2031
DNMG432ESX	●	.500	.1875	.0313	.2031
DNMG431EUP	●	.500	.1875	.0156	.2031
DNMG432EUP	●	.500	.1875	.0313	.2031
DNMG431EUX	●	.500	.1875	.0156	.2031
DNMG432EUX	●	.500	.1875	.0313	.2031
DNMG433EUX	●	.500	.1875	.0469	.2031

DNMX 55° Diamond/Negative					
Sumitomo Catalog Number	AC8025P	Inscribed Circle	Thickness	Nose Radius	Insert Hole Diameter
DNMX332ESEW	●	.375	.1875	.0313	.150
DNMX431ESEW	●	.500	.1875	.0156	.2031
DNMX432ESEW	●	.500	.1875	.0313	.2031

See next page for negative inserts availability continued



星隆貿易股份有限公司  
Sing-Lung Trading Co., Ltd.

專業 | 誠信 | 品質 | 服務

☎ TEL: 02-25955260 FAX: 02-25944938

📍 ADD: 台北市大同區承德路三段67號

@ E-mail: sales@sl.com.tw

🌐 WEB: www.sl.com.tw